

FINAL JEE-MAIN EXAMINATION - JUNE, 2022

Held On Saturday, 25 June 2022

TIME : 9: 00 AM to 12 : 00 PM

SECTION-A

1. Bonding in which of the following diatomic molecule(s) become(s) stronger, on the basis of MO Theory, by removal of an electron ?

(A) NO (B) N₂
(C) O₂ (D) C₂
(E) B₂

Choose the most appropriate answer from the options given below :-

(A) (A), (B), (C) only (B) (B), (C), (E) only
(C) (A), (C) only (D) (D) only

Official Ans. by NTA (C)

Ans. (C)

- Sol.** Bond strength \propto Bond order
removal of electron from antibonding MO increases B.O.

NO & O₂ has valence e- in π^* orbital.

2. Incorrect statement for Tyndall effect is :-

(A) The refractive indices of the dispersed phase and the dispersion medium differ greatly in magnitude.
(B) The diameter of the dispersed particles is much smaller than the wavelength of the light used.
(C) During projection of movies in the cinemas hall, Tyndall effect is noticed.
(D) It is used to distinguish a true solution from a colloidal solution.

Official Ans. by NTA (B)

Ans. (B)

- Sol.** The diameter of dispersed particle should be somewhat below or near the wavelength of light.

3. The pair, in which ions are isoelectronic with Al³⁺ is :-

(A) Br⁻ and Be²⁺ (B) Cl⁻ and Li⁺
(C) S²⁻ and K⁺ (D) O²⁻ and Mg²⁺

Official Ans. by NTA (D)

Ans. (D)

- Sol.** Isoelectronic species have same no. of electrons
Al³⁺, O²⁻, Mg²⁺ all have 10 electrons.

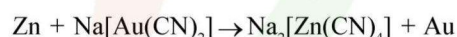
4. Leaching of gold with dilute aqueous solution of NaCN in presence of oxygen gives complex [A], which on reaction with zinc forms the elemental gold and another complex [B]. [A] and [B], respectively are :-

(A) [Au(CN)₄]⁻ and [Zn(CN)₂(OH)₂]²⁻
(B) [Au(CN)₂]⁻ and [Zn(OH)₄]²⁻
(C) [Au(CN)₂]⁻ and [Zn(CN)₄]²⁻
(D) [Au(CN)₄]²⁻ and [Zn(CN)₆]⁴⁻

Official Ans. by NTA (C)

Ans. (C)

- Sol.** Au + NaCN \rightarrow Na[Au(CN)₂]



5. Number of electron deficient molecules among the following

PH₃, B₂H₆, CCl₄, NH₃, LiH and BCl₃ is

(A) 0 (B) 1
(C) 2 (D) 3

Official Ans. by NTA (C)

Ans. (C)

- Sol.** Electron deficient species have less than 8 electrons (or two electrons for H) in their valence (incomplete octet)

B₂H₆, BCl₃ have incomplete octet.

6. Which one of the following alkaline earth metal ions has the highest ionic mobility in its aqueous solution?

(A) Be²⁺ (B) Mg²⁺
(C) Ca²⁺ (D) Sr²⁺

Official Ans. by NTA (D)

Ans. (D)

- Sol.** Highest ionic mobility corresponds to lowest extent of hydration and highest size of gaseous ion.

Hence Sr²⁺ has the highest ionic mobility in its aqueous solution



7. White precipitate of AgCl dissolves in aqueous ammonia solution due to formation of:

- (A) $[Ag(NH_3)_4]Cl_2$ (B) $[AgCl_2(NH_3)_2]$
 (C) $[Ag(NH_3)_2]Cl$ (D) $[Ag(NH_3)Cl]Cl$

Official Ans. by NTA (C)

Ans. (C)

Sol. $AgCl + 2NH_3 \rightarrow [Ag(NH_3)_2]^+Cl^-$
 soluble

8. Cerium (IV) has a noble gas configuration. Which of the following is correct statement about it?

- (A) It will not prefer to undergo redox reactions.
 (B) It will prefer to gain electron and act as an oxidizing agent
 (C) It will prefer to give away an electron and behave as reducing agent
 (D) It acts as both, oxidizing and reducing agent.

Official Ans. by NTA (B)

Ans. (B)

Sol. Cerium exists in two different oxidation state +3, +4



It shows Ce^{+4} acts as a strong oxidising agent & accepts electron.

9. Among the following, which is the strongest oxidizing agent ?

- (A) Mn^{3+} (B) Fe^{3+}
 (C) Ti^{3+} (D) Cr^{3+}

Official Ans. by NTA (A)

Ans. (A)

Sol. Strongest oxidising agent have highest reduction potential value

$$E^0_{Mn^{3+}/Mn^{+2}} = 1.51V \text{ (highest)}$$

10. The eutrophication of water body results in :

- (A) loss of Biodiversity
 (B) breakdown of organic matter
 (C) increase in biodiversity
 (D) decrease in BOD.

Official Ans. by NTA (A)

Ans. (A)

Sol. Eutrophication of water body results in loss of Biodiversity.

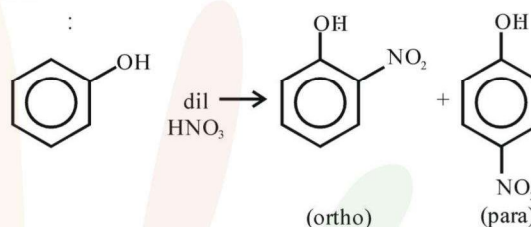
11. Phenol on reaction with dilute nitric acid, gives two products. Which method will be most effective for large scale separation ?

- (A) Chromatographic separation
 (B) Fractional Crystallisation
 (C) Steam distillation
 (D) Sublimation

Official Ans. by NTA (C)

Ans. (C)

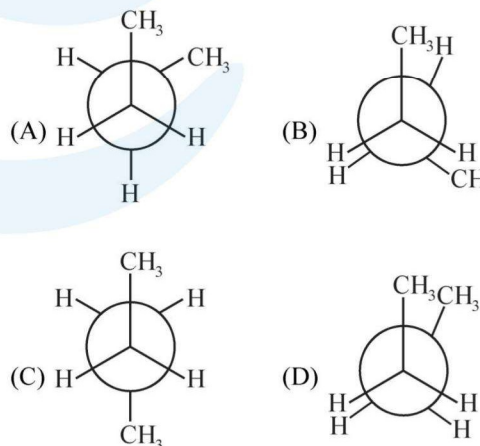
Sol.



Para product has higher boiling point than ortho as intermolecular H-bond is possible in former, whereas intramolecular H-bond is possible in ortho product.

Steam distillation can separate them as ortho product is steam volatile.

12. In the following structures, which one is having staggered conformation with maximum dihedral angle?



Official Ans. by NTA (C)

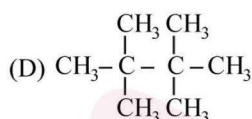
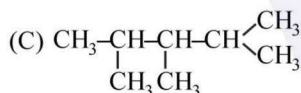
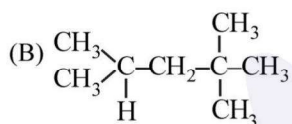
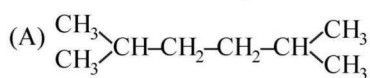
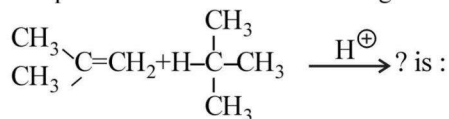
Ans. (C)



Sol. Dihedral angle : It's the angle b/w 2 specified groups (-CH₃ here)

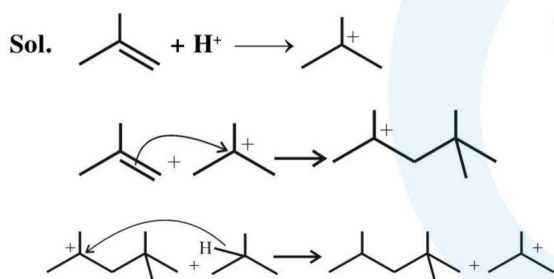
Staggered form is Given in option (C) & the angle is 180°

13. The products formed in the following reaction.



Official Ans. by NTA (B)

Ans. (B)

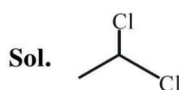


14. The IUPAC name of ethylidene chloride is :-

- (A) 1-Chloroethene
- (B) 1-Chloroethyne
- (C) 1,2-Dichloroethane
- (D) 1,1-Dichloroethane

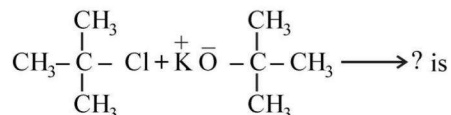
Official Ans. by NTA (D)

Ans. (D)



“1, 1-Dichloroethane is Ethylidene chloride”

15. The major product in the reaction

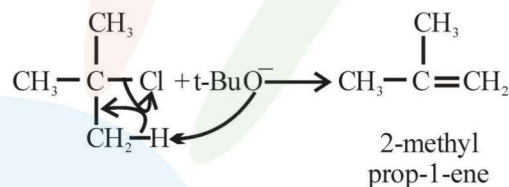


- (A) t-Butyl ethyl ether
- (B) 2,2-Dimethyl butane
- (C) 2-Methyl pent-1-ene
- (D) 2-Methyl prop-1-ene

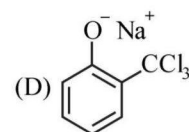
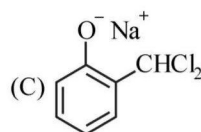
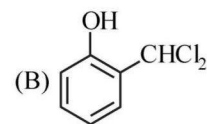
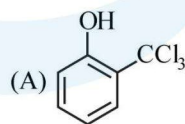
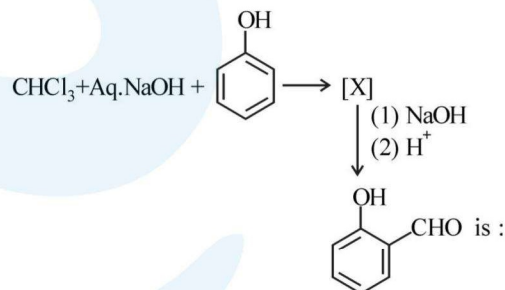
Official Ans. by NTA (D)

Ans. (D)

Sol. We have been given a bulky base, hence elimination will take place & not substitution.



16. The intermediate X, in the reaction

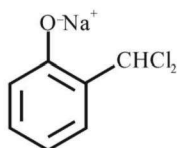


Official Ans. by NTA (C)

Ans. (C)

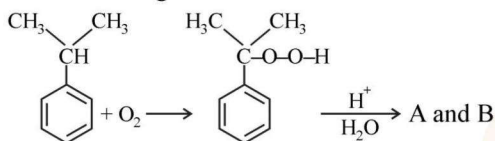


Sol. It's a classic Reimer-Tiemann reaction.

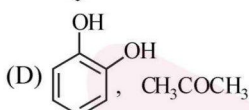
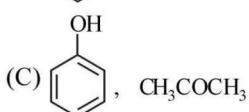
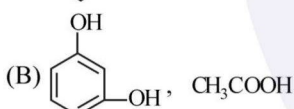
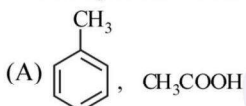


Will be the intermediate formed.

17. In the following reaction :



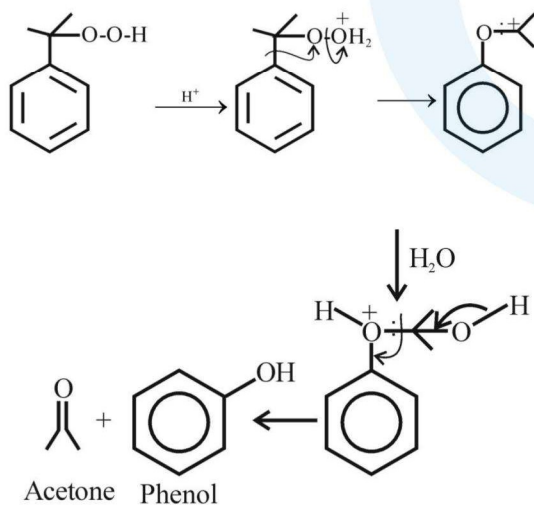
The compounds A and B respectively are :-



Official Ans. by NTA (C)

Ans. (C)

Sol. Given reaction is cumene-Peroxide method for the preparation of phenol. In this reaction



18. The reaction of $\text{R}-\overset{\text{O}}{\parallel}{\text{C}}-\text{NH}_2$ with bromine and KOH

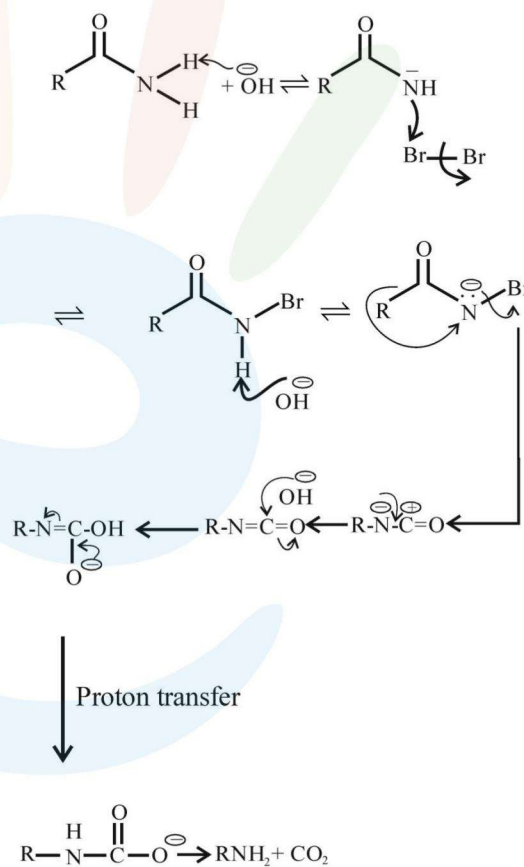
gives RNH_2 as the end product. Which one of the following is the intermediate product formed in this reaction ?

- (A) $\text{R}-\overset{\text{O}}{\parallel}{\text{C}}-\text{NH}-\text{Br}$ (B) $\text{R}-\text{NH}-\text{Br}$
 (C) $\text{R}-\text{N}=\text{C}=\text{O}$ (D) $\text{R}-\overset{\text{O}}{\parallel}{\text{C}}-\text{NBr}_2$

Official Ans. by NTA (C)

Ans. (A & C)

Sol. The given reaction is Hoffmann-Bromide degradation method.





19. Using very little soap while washing clothes, does not serve the purpose of cleaning of clothes because
- (A) soap particles remain floating in water as ions
 (B) the hydrophobic part of soap is not able to take away grease
 (C) the micelles are not formed due to concentration of soap, below its CMC value
 (D) colloidal structure of soap in water is completely disturbed.

Official Ans. by NTA (C)

Ans. (C)

- Sol.** Micelle formation only takes place above CMC.
20. Which one of the following is an example of artificial sweetner ?
- (A) Bithional (B) Alitame
 (C) Salvarsan (D) Lactose

Official Ans. by NTA (B)

Ans. (B)

- Sol.** Alitame is a second generation dipeptide sweetner that is 200 times sweeter than sucrose.

SECTION-B

1. The number of N atoms is 681 g of $C_7H_5N_3O_6$ is $x \times 10^{21}$. The value of x is _____ ($N_A = 6.02 \times 10^{23} \text{ mol}^{-1}$) (Nearest Integer)

Official Ans. by NTA (5418)

Ans. (5418)

- Sol.** M.M. of $C_7H_5N_3O_6$ is $84 + 5 + 42 + 96 = 227$

$$n_{C_7H_5N_3O_6} = \frac{681}{227} = 3$$

$$n_N = \frac{681}{227} \times 3 = 9 \text{ mol}$$

$$\text{no. of N atoms} = 9 \times 6.02 \times 10^{23}$$

$$= 5418 \times 10^{21}$$

\therefore The answer is 5418.

2. The distance between Na^+ and Cl^- ions in solid NaCl of density 43.1 g cm^{-3} is _____ $\times 10^{-10} \text{ m}$. (Nearest Integer)
 (Given : $N_A = 6.02 \times 10^{23} \text{ mol}^{-1}$)

Official Ans. by NTA (1)

Ans. (1)

- Sol.** Unit cell formula – Na_4Cl_4

$$\text{Mass per unit cell} = \frac{Z \times \text{M.M.}}{N_A} \text{ g}$$

$$= \frac{4 \times 58.5}{N_A} \text{ g}$$

$$d_{\text{unit cell}} = \frac{m}{V} = \frac{m}{a^3}$$

$$\Rightarrow \frac{4 \times 58.5}{N_A \cdot a^3} = 43.1$$

$$\Rightarrow a^3 = 9.02 \times 10^{-24} \text{ cm}^3$$

$$\Rightarrow a = 2.08 \times 10^{-8} \text{ cm}$$

$$\Rightarrow a = 2.08 \times 10^{-10} \text{ m}$$

$$\text{Also } a = 2(r_{Na^+} + r_{Cl^-})$$

$$\Rightarrow r_{Na^+} + r_{Cl^-} = 1.04 \times 10^{-10} \text{ m}$$

\therefore The answer is 1

3. The longest wavelength of light that can be used for the ionisation of lithium atom (Li) in its ground state is $x \times 10^{-8} \text{ m}$. The value of x is _____. (Nearest Integer)

(Given : Energy of the electron in the first shell of the hydrogen atom is $-2.2 \times 10^{-18} \text{ J}$; $h = 6.63 \times 10^{-34} \text{ Js}$ and $c = 3 \times 10^8 \text{ ms}^{-1}$)

Official Ans. by NTA (4)

Ans. (Bonus)

- Sol.** We can not calculate I.E. of lithium atom.

4. The standard entropy change for the reaction $4Fe(s) + 3O_2(g) \rightarrow 2Fe_2O_3(s)$ is -550 JK^{-1} at 298 K .

[Given : The standard enthalpy change for the reaction is -165 kJ mol^{-1}]. The temperature in K at which the reaction attains equilibrium is _____. (Nearest Integer)

Official Ans. by NTA (300)

Ans. (300)



Sol. $\Delta G = \Delta H - T\Delta S = 0$ at equilibrium

$$\Rightarrow -165 \times 10^3 - T \times (-505) = 0$$

$$\Rightarrow T = 300\text{K}$$

The answer is 300

5. 1 L aqueous solution of H_2SO_4 contains 0.02 m mol H_2SO_4 . 50% of this solution is diluted with deionized water to give 1 L solution (A). In solution (A), 0.01 m mol of H_2SO_4 are added. Total m mols of H_2SO_4 in the final solution is _____ $\times 10^3$ m mols.

Official Ans. by NTA (15)

Ans. (0)

Sol. $n_{\text{H}_2\text{SO}_4}$ in Solⁿ A = 50% of original solution

$$= 0.01 \text{ m mol.}$$

$$n_{\text{H}_2\text{SO}_4} \text{ in Final solution} = 0.01 + 0.01$$

$$= 0.02 \text{ mmol}$$

$$= 0.00002 \times 10^3 \text{ mmol}$$

The answer 0

6. The standard free energy change (ΔG°) for 50% dissociation of N_2O_4 into NO_2 at 27°C and 1 atm pressure is $-x \text{ J mol}^{-1}$. The value of x is _____. (Nearest Integer)

[Given : $R = 8.31 \text{ J K}^{-1} \text{ mol}^{-1}$, $\log 1.33 = 0.1239$
 $\ln 10 = 2.3$]

Official Ans. by NTA (710)

Ans. (710)

Sol. $\text{N}_2\text{O}_4 \rightleftharpoons 2\text{NO}_2$

$$t = 0 \quad 1 \text{ mol}$$

$$t = t \quad (1-0.5) \text{ mol} \quad 0.5 \times 2 \text{ mol}$$

$$= 0.5 \text{ mol} \quad 1 \text{ mol}$$

$$k_p = \frac{\left(\frac{1}{1.5} \times 1\right)^2}{\left(\frac{0.5}{1.5} \times 1\right)} = \frac{1}{0.75} = \frac{100}{75}$$

$$= 1.33$$

$$\Delta G^\circ = -RT \ln k_p$$

$$= -8.31 \times 300 \times \ln(1.33) = -710.45 \text{ J / mol}$$

$$= -710 \text{ J/mol.}$$

7. In a cell, the following reactions take place



The standard electrode potential for the spontaneous reaction in the cell is $x \times 10^{-2} \text{ V}$ 298 K. The value of x is _____ (Nearest Integer)

Official Ans. by NTA (23)

Ans. (23)

Sol. $\text{Fe}^{+3} + \text{I}^- \longrightarrow \text{I}_2 + \text{Fe}^{+2}$
Cathode anode

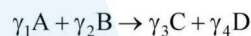
$$E_{\text{Cell}}^\circ = E_{\text{cathode}}^\circ - E_{\text{anode}}^\circ$$

$$= 0.77 - 0.54$$

$$= 0.23$$

$$= 23 \times 10^{-2} \text{ V}$$

8. For a given chemical reaction



Concentration of C changes from 10 mmol dm^{-3} to 20 mmol dm^{-3} in 10 seconds. Rate of appearance of D is 1.5 times the rate of disappearance of B which is twice the rate of disappearance A. The rate of appearance of D has been experimentally determined to be 9 mmol $\text{dm}^{-3} \text{ s}^{-1}$. Therefore the rate of reaction is _____ mmol $\text{dm}^{-3} \text{ s}^{-1}$. (Nearest Integer)

Official Ans. by NTA (1)

Ans. (1)

Sol. $\gamma_1\text{A} + \gamma_2\text{B} \longrightarrow \gamma_3\text{C} + \gamma_4\text{D}$

$$\text{Given: } +\frac{d[\text{D}]}{dt} = \frac{-3}{2} \frac{d[\text{B}]}{dt}$$

$$\Rightarrow \frac{-1}{2} \frac{d[\text{B}]}{dt} = \frac{+1}{3} \frac{d[\text{D}]}{dt}$$

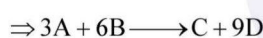
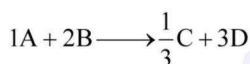


$$-\frac{d[B]}{dt} = -2\frac{d[A]}{dt} \Rightarrow -\frac{1}{2}\frac{d[B]}{dt} = \frac{-d(A)}{dt}$$

$$+\frac{d[B]}{dt} = 9 \text{ mmol dm}^{-3} \text{ s}^{-1}$$

$$+\frac{d[C]}{dt} = \frac{20-10}{10} = 1 \text{ mmol dm}^{-3} \text{ s}^{-1}$$

$$+\frac{d[C]}{dt} = \frac{1}{9} \times \frac{+d[D]}{dt}$$



$$\text{Rate of reaction} = \frac{+d[C]}{dt} = 1 \text{ mmol dm}^{-3} \text{ s}^{-1}$$

9. If $[\text{Cu}(\text{H}_2\text{O})_4]^{2+}$ absorbs a light of wavelength 600 nm for d-d transition, then the value of octahedral crystal field splitting energy for $[\text{Cu}(\text{H}_2\text{O})_6]^{2+}$ will be _____ $\times 10^{-21}$ J. (Nearest Integer)

(Given : $h = 6.63 \times 10^{-34}$ Js

and $c = 3.08 \times 10^8 \text{ ms}^{-1}$)

Official Ans. by NTA (745)

Ans. (766)

Sol. $\Delta_t = \frac{hc}{\lambda} = \frac{6.63 \times 10^{-34} \times 3.08 \times 10^8}{600 \times 10^{-9}}$

$$= \frac{6.63 \times 3.08 \times 10^{-17}}{600}$$

$$= 0.034034 \times 10^{-17}$$

$$= 340.34 \times 10^{-21} \text{ J}$$

$$\Delta_o = \frac{9}{4} \Delta_t$$

$$= \frac{9}{4} \times 340.34 \times 10^{-21}$$

$$= 765.765 \times 10^{-21} \text{ J}$$

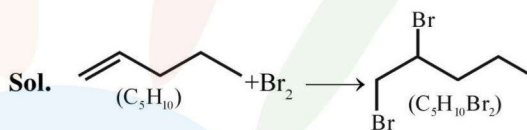
$$\approx 766 \times 10^{-21} \text{ J}$$

Answer = 766

10. Number of grams of bromine that will completely react with 5.0g of pent-1-ene is _____ $\times 10^{-2}$ g. (Atomic mass of Br = 80 g/mol) [Nearest Integer]

Official Ans. by NTA (1136)

Ans. (1143)



$$\text{moles of Br}_2 = \text{moles of C}_5\text{H}_{10}$$

$$\Rightarrow \frac{w}{160} = \frac{5}{70}$$

$$\Rightarrow w = \frac{5 \times 160}{70} \text{ g}$$

$$= 11.428 \text{ g}$$

$$= 1142.8 \times 10^{-2} \text{ g} \approx 1143 \times 10^{-2} \text{ g}$$